



We are essential because so many of the industries we serve are — a simple statement, but not one to be taken lightly. In order for us to be “OPEN” we first have to take care of ourselves. We’ve implemented and are adhering to the health guidelines set forth. With a healthy crew, we can manufacture the parts you need to keep your business viable. With a Field Service crew at the ready, we’ll make sure your conveyor belts keep moving what they’re supposed to; a supply chain in motion.

We will do our part and thanks in advance for you continuing to do yours.

Dell Gultknecht, General Manager

rkrubber.com

Going to Great Lengths...

At RK RUBBER we are totally committed to a safe and healthy working environment for our workers, suppliers, and customers.

We will be following the guidelines of the Center for Disease Control and Prevention:
<https://www.cdc.gov/coronavirus/2019-nCoV/index.html>
and will continue to adjust our operating plans as needed; safety first.



RUBBER AND SILICONE FABRICATED PARTS



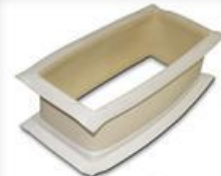
White FDA Nitrile Sleeve



Rockline Urethane Belt Cleaner Blade



Cotton Belt with Clipper Belt Lacing



FDA Pure Gum Connector with White Nitrile Flanges

[RFQ](#)

We REPAIR Conveyor Belts

We'll
make sure
you stay
essential!



Pulp & Paper



Food Processing



Construction



Aggregate

[Repair Video](#)

Call: 1-800-747-9197

24/7 Field Service: 1-800-747-9197... prompt 1

Email: <https://rkrubber.com/contact.cfm>

Fax: 414-562-7557



[Contact us](#)



EXPERIENCE = SOLUTIONS



RK Rubber offers immediate phone quotes. Contact us today!
800.747.9197 | www.rkrubber.com