

There's a reason
we've been around
for over
125 years!



Proudly made
in the U.S.A.
using the highest
quality materials.



Experience = Solutions

We Do Silicone

Sleeves, gaskets, connectors, specialty fabrication all available in silicone.
We stock white, red, gray, and black.



"OK, EVERYBODY SING!...
THE WHEELS ON THE CONVEYOR
GO ROUND AND ROUND... ♪"

See all that's going on at RK RUBBER!



PO Box # 91430
Milwaukee, WI 53209

414-562-0787 1-800-747-9197

rkrubber.com

MAGNETIC SEPARATOR BELTS



WHAT WE CAN DO:

- Heavy duty rubber belt with hot vulcanized rubber cleats
- Heavy duty rubber belt with stainless steel angle iron cleats attached
- Perforated belts for attaching angle iron cleats/armor-cladding

Different belt compounds are available for various conveying conditions. Talk to your nearest RK Rubber team member for more information.

PRODUCTS WE CAN SHIP IN WEEKS NOT MONTHS:



Sleeves/Connectors



*Thick Gray Silicone
Spliced Tube*

*Tapered
Rubber Sleeve*

- Most materials up to 1" thick
- Straight/Tapered
- Vulcanized to size
- Lengths up to 12'+
- Ground finish machined to spec
- HVAC
- Powder
- Commercial, chemical and food grade materials
- Concrete batch plants
- Discharge chutes
- Reinforced Rubber/Belting
- Silicone

Rubber Sleeve Order Form

* Measurement Unit used in your dimensions below (inches, cm, other)

Part Dimensions

* A ID

* B OD

* C Length

FOR TAPERED SLEEVE ONLY:

* D ID #2

* E OD #2

* F Thickness

Material

Application

* Contact

* Email

* required

SUBMIT

Perspective

Visit rkrubber.com 'parts order guide' for quick, easy, and accurate ordering!

Conveyor Belt

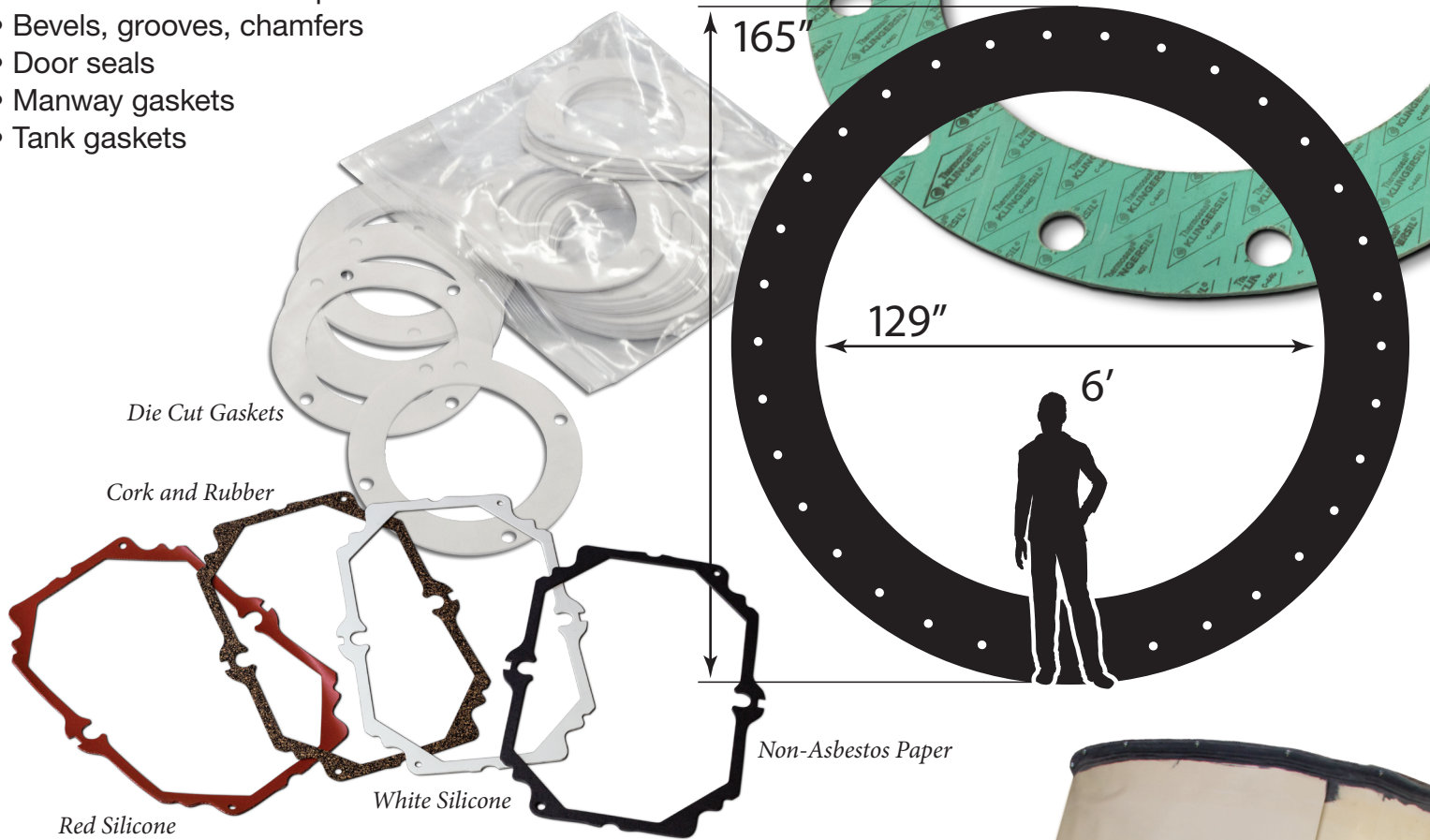
- Lightweight/Heavyweight
- Smooth, rougtop, cleated
- Cut to length
- Fastener installation
- Flexco
- Superscrew
- Vulcanized to length in house or onsite
- Magnetic separators
- OEM replacements
- One off retrofits



*Heavy Duty 750# PIW
Conveyor Belt with V Guides
Each Edge and Flexco Fasteners*

Gaskets/O-rings

- Round square and rectangular flange gaskets of all sizes
- Hand fabricated or die cut
- Vulcanized cord rings to size 1/8" to 2" cross section
- Machined or extruded profiles
- Bevels, grooves, chamfers
- Door seals
- Manway gaskets
- Tank gaskets

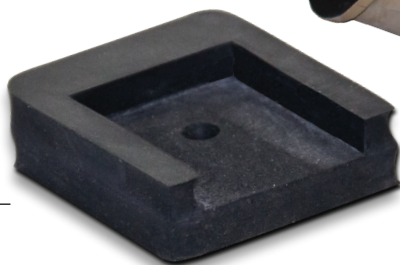


Fabrication

We are proud to offer a wide selection of made to order fabricated parts.

- Rubber and silicone prototypes
- Replacements for obsolete parts
- New or replacement parts for proprietary equipment
- One-offs

*Rubber Protective Cap -
Cart Handle*



*Custom
robot shroud*



*Machined Neoprene
Tapered Bushing*

EPDM

EPDM rubber is generally used in applications that require outstanding weather, ozone, or temperature resistance.

EPDM also has a great resistance to animal and vegetable oils, and excellent resistance to acids, alkalis, and ketones. EPDM is NOT compatible with petroleum based oils.

Elastomer	Color	Durometer Range	Tensile Strength Range (psi)	Temperature Range (Fahrenheit)	Elongation	Thickness Range (inches)
EPDM	Black	40, 50, 60, 80	800 – 1800	-55° to +350°	240% – 400%	0.03125 – 0.5

NEOPRENE

Neoprene rubber is a general purpose compound that offers oil resistance and has good chemical stability.

It is also able to remain flexible over a wide temperature range. Generally, the many different grades of neoprene have a direct correlation to the actual percentage of neoprene in the compounds.

Elastomer	Color	Durometer Range	Tensile Strength Range (psi)	Temperature Range (Fahrenheit)	Elongation	Thickness Range (inches)
Neoprene	Black	20, 40, 50, 60, 70, 80	800 – 2000	-40° to +200°	100% – 400%	0.015 – 2

NITRILE BUNA – N

Buna – N has excellent resistance to petroleum-based oils. It also has good resistance to heat, abrasions, water, and gasoline. Nitrile Buna – N can be used for automotive applications

Elastomer	Color	Durometer Range	Tensile Strength Range (psi)	Temperature Range (Fahrenheit)	Elongation	Thickness Range (inches)
Nitrile Buna – N	Black	40 – 80	80 – 1000	-20° to +170°	300%	0.031 – 2

PURE GUM

Natural rubber has excellent physical properties. A true floating stock will have very good tear strength and abrasion resistance. It is also non-marking and non-toxic, and made with FDA ingredients

Elastomer	Color	Durometer Range	Tensile Strength Range (psi)	Temperature Range (Fahrenheit)	Elongation	Thickness Range (inches)
Natural Rubber	Tan, Natural	40	3000	-20° to +150°	600%	0.015 – 1

SILICONE

Silicone is an organic/synthetic compound that offers protection in temperature extremes. It is also weather and fire resistant and a great insulator. Silicone has low tensile abrasion and chemical resistance.

Elastomer	Color	Durometer Range	Tensile Strength Range (psi)	Temperature Range (Fahrenheit)	Elongation	Thickness Range (inches)
Silicone	Multiple	25 – 80	600	-80° to +450° (500° intermittence)	250% – 500%	0.010 – 1

WHITE NITRILE

White nitrile is manufactured from FDA-approved ingredient, such as food, pharmaceutical, and cosmetic processing.

White nitrile offers good abrasion resistance and handles oily and greasy products well.

Elastomer	Color	Durometer Range	Tensile Strength Range (psi)	Temperature Range (Fahrenheit)	Elongation	Thickness Range (inches)
White Nitrile	White	40, 60	1000 – 1700	-25° to +190°	400%	0.015 – 0.025

More materials available at RKRUBBER.COM